

# 10600nm CO<sub>2</sub> Fractional Laser

## SM10600KKLB

- ✓ Articulated arm ensures light loss less than 5%
- ✓ TFT touching screen, sophisticated humidity control system
- ✓ Coherent RF Laser emitter & High cost performance

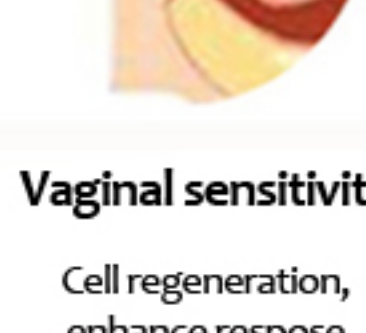
## Treatment Theory

- 1 Target tissue skin becomes dark and aged before treatment
- 2 Use laser to scan and treat target tissue, heat can be transmitted from the superficial to the dermis of the skin.
- 3 Traumatic holes and holes between the normal tissue to produce thermal bridging, start the skin trauma repair mechanism (Inflammatory stage, proliferative phase, remodeling stage)
- 4 Produce a large number of new collagen, to the leather frame structure reconstruction, facial contour sculpture, wrinkles disappear, delicate skin texture, acne smoothing effect.



### Vaginal health

Comprehensive improvement, reduce infection



### Vaginal sensitivity

Cell regeneration, enhance response



### Vaginal lubrication

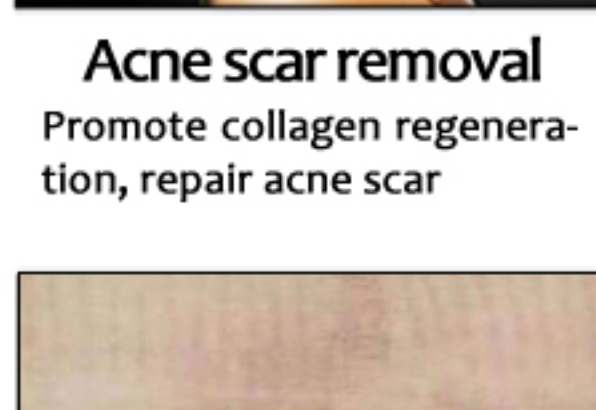
Promote secretion eliminate dryness



### Vaginal tighten

High-effective tightening

## Application



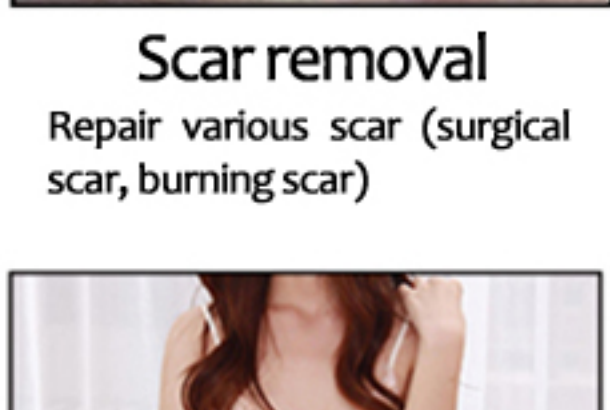
### Acne scar removal

Promote collagen regeneration, repair acne scar



### Full skin care

Full skin care (rejuvenation, tightening, shrink pores, anti-wrinkle & anti-aging)



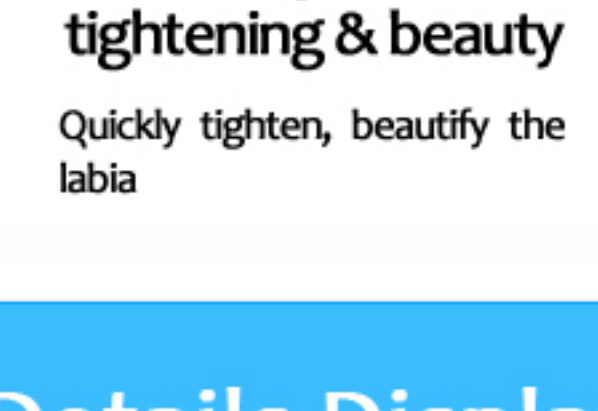
### Scar removal

Repair various scar (surgical scar, burning scar)



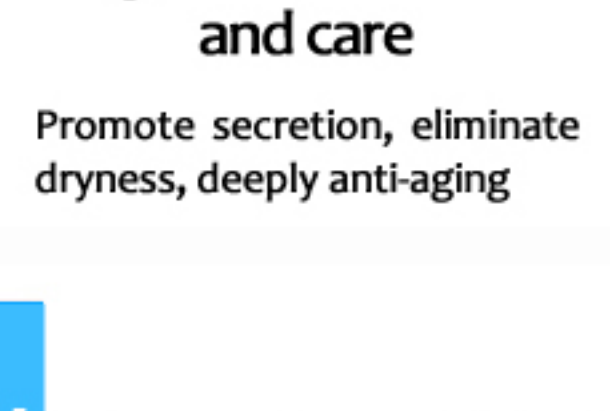
### Stretch marks removal

Treatment of stretch marks, recover beautiful skin.



### Vaginal tightening & beauty

Quickly tighten, beautify the labia



### Vaginal rejuvenation and care

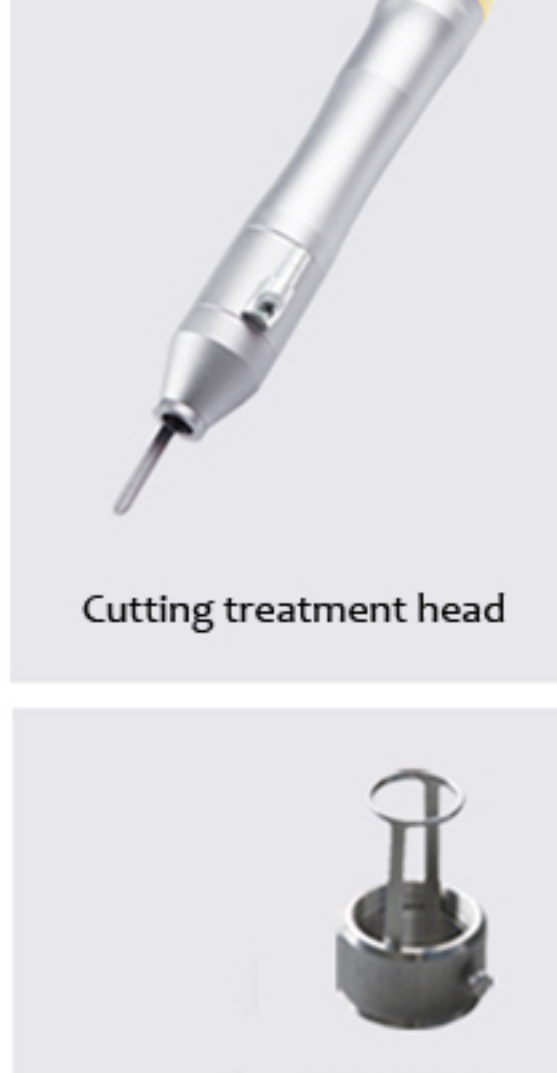
Promote secretion, eliminate dryness, deeply anti-aging

## Details Display



## A variety of tubes and treatment heads

Equipped with fixed focus tube, zoom tube and vaginal treatment head. It can be changed according to different part and requirement.



Cutting treatment head



Vaginal treatment head



Zoom tube



Fixed focus tube



Scanner (CPG)

## Advantages

4 Working Modes

No consumables

Easy to Operate

Less Thermal Damage

The stronger peeling ability, The deeper peeling depth

Less inflammation, simple postoperative care

Less damage to surrounding normal skin tissue

### Low cost

Without consumables

### High Satisfaction

Satisfactory results, build client trust, easily to get more clients and investment back.

### Good Project

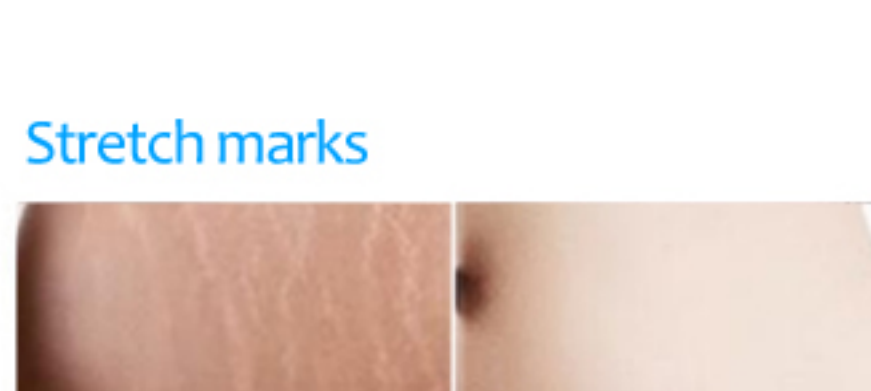
Comfortable client experience, build first-class products, and become a local leading brand.

### Good Reputation

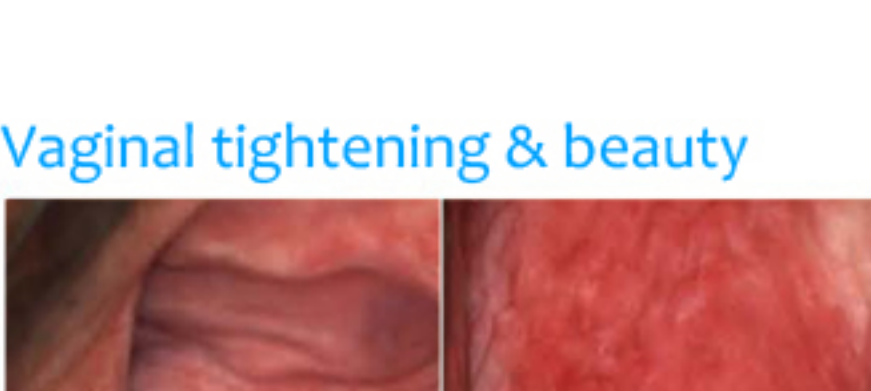
Create a strong brand and attract high-end clients. Clients will advertise instead of salon owners.

## Before & After

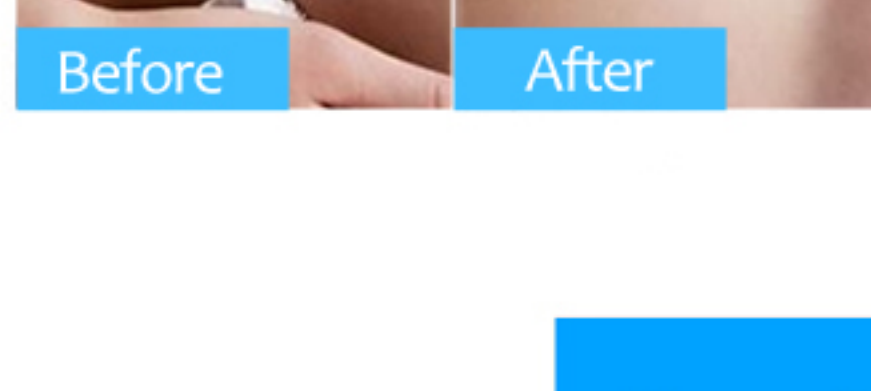
### Wrinkle



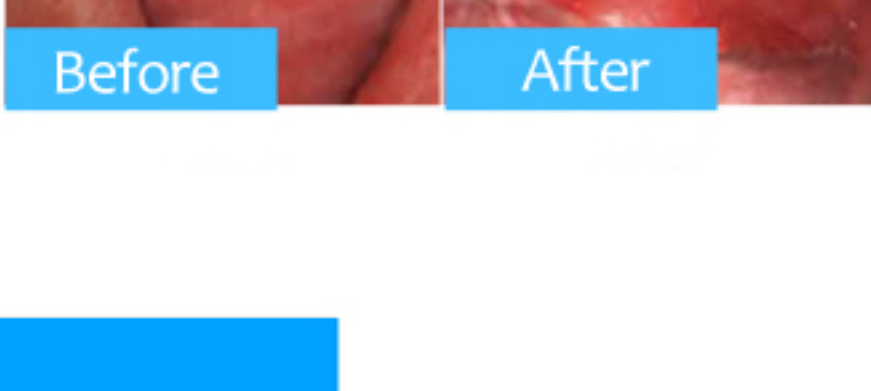
### Acne scar



### Acne



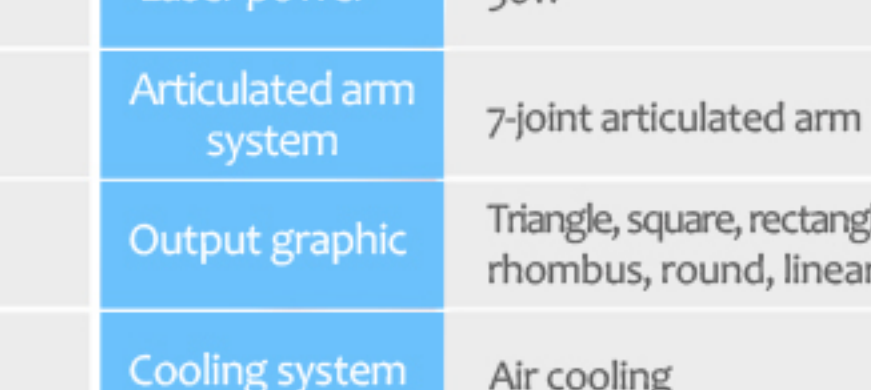
### Scar



### Stretch marks



### Vaginal tightening & beauty



## Specification

Model name	SM10600KKLB	Laser power	30w
Pulse interval	1ms-100ms	Articulated arm system	7-joint articulated arm
Pulse energy	2mj-200mj	Output graphic	Triangle, square, rectangle, rhombus, round, linear
Pulse width	0.067ms-0.67ms	Cooling system	Air cooling
Spot size	80μm-2000μm	Package dimension	95cm*45cm*120cm
Scanning mode	Disorderly & orderly fractional scanning	Gross weight	98kgs
Output mode	Continuous, fractional, ultra pulse & vaginal treatment	Power supply	AC110/220V±10% 50Hz-60Hz