

1927nm Fractional Thulium Laser

Ablative & non-ablative double effect

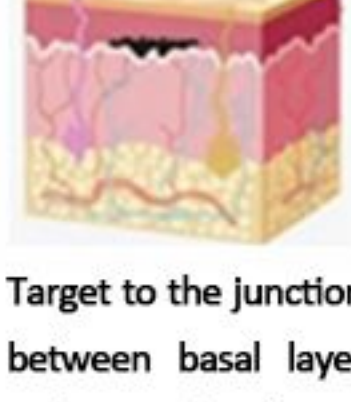


1927KK

- ✓ Skin brightening & whitening
- ✓ Skin texture improvement
- ✓ Wrinkles and fine lines reduction
- ✓ Acne scar Removal

1927nm Thulium Laser Treatment Theory

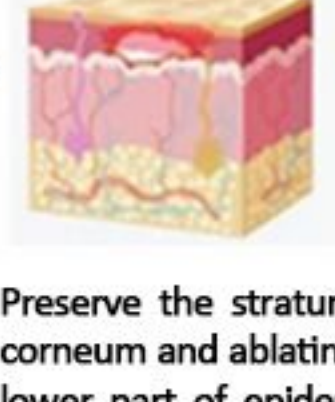
1927nm fractional thulium laser can realize free switching of ablative and non-ablative by controlling power output, operation time, number of overlays, etc.



Target to the junction between basal layer and upper dermis



Fractional laser irradiation



Preserve the stratum corneum and ablating lower part of epidermis Coagulation effect on the upper part of dermis



Occurring micro crusts at the surface of skin. Crusts will preserve any infection and PIH.

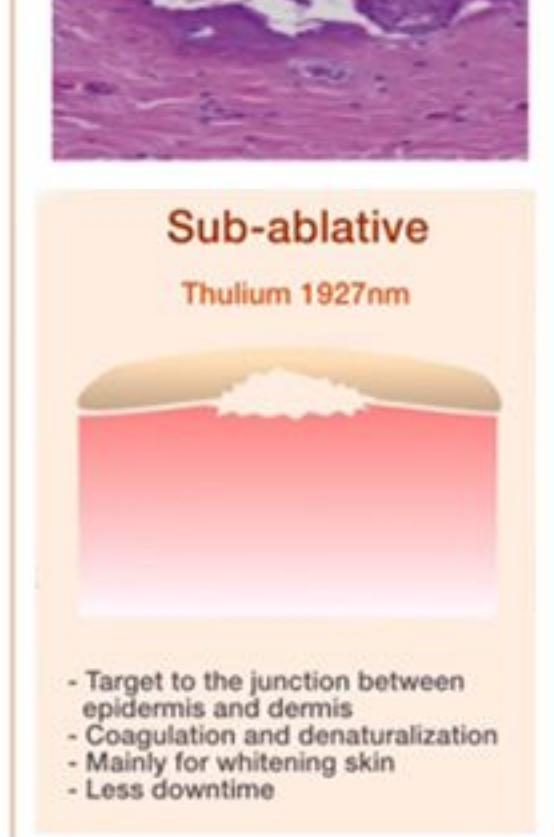
Comparison with 1550nm Er:bium Glass and 10600nm CO2 Laser



Non-ablative

Er:Glass 1550nm

- Thermal effect to dermis
- Inducing protein denaturalization
- Mainly for skin rejuvenation
- Less downtime



Sub-ablative

Thulium 1927nm

- Target to the junction between epidermis and dermis
- Coagulation and denaturalization
- Mainly for whitening skin
- Less downtime



Ablative

CO2 10600nm

- Skin resurfacing and rejuvenation
- High risk, high return
- Prone to PIH
- Longer downtime than non-ablative

1927nm Thulium Laser Application

- Skin loosening
- Acne scar
- Skin reconstruction
- Skin Rejuvenation/Brightening & whitening
- Hyperpigmentation
- Pigmentation
- Pore bulky



1927nm Thulium Laser Details Display

Intelligent Laser Handle

Fiber conduction | stable output | no more losses

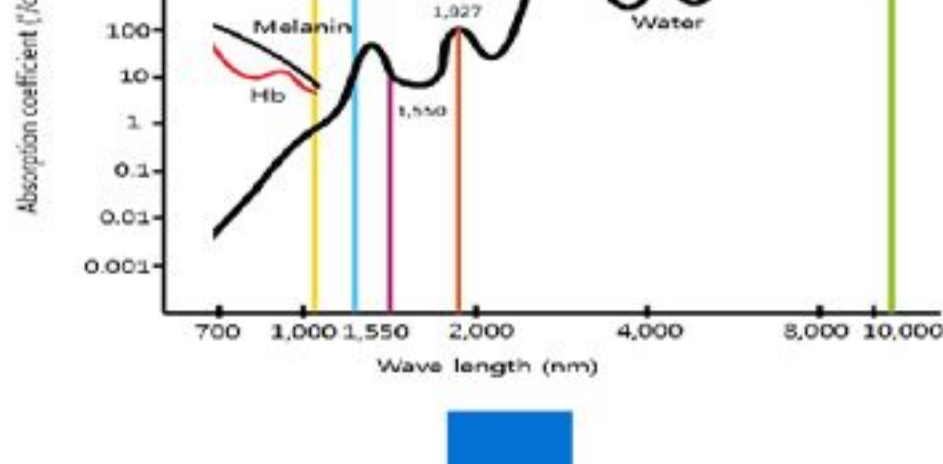


Treatment Heads



Adjustable scanning pattern, scanning area, focal spot density and quantity for different treatment areas

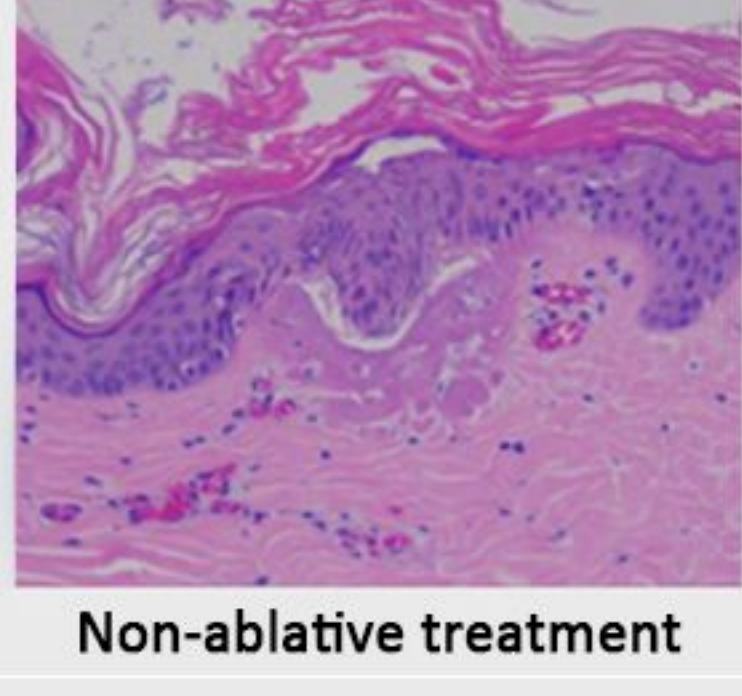
1927nm Thulium Laser Features



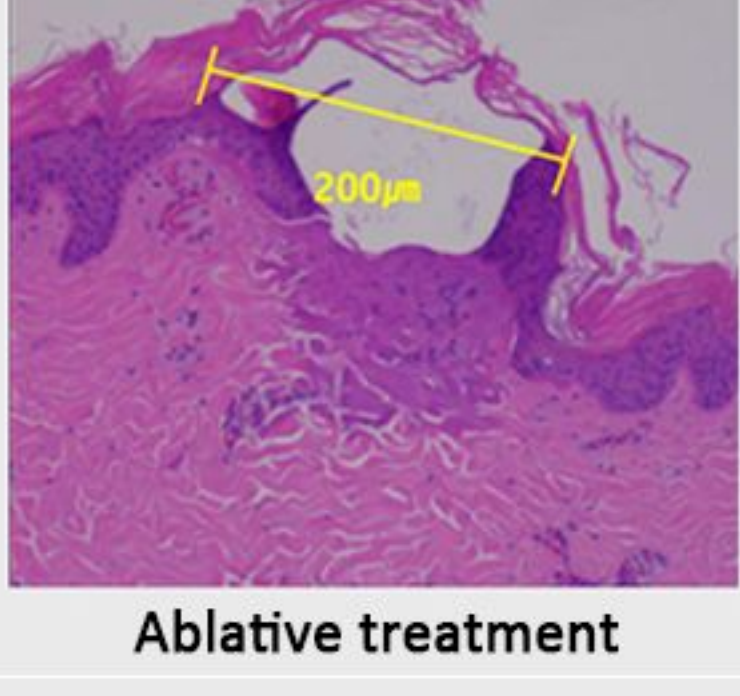
- ✓ Between ablative and non-ablative
- ✓ Mainly water absorption
- ✓ Penetration depth and energy are concentrated between the lower part of the epidermis and the upper part of the dermis
- ✓ The maximum depth of ablative is 200-300um
- ✓ For superficial epidermal pigmented lesions
- ✓ Improve skin texture

1927nm Thulium Laser Advantages

1. 1927nm Thulium Laser can remove pigment particles more thoroughly than the non-ablative laser



Non-ablative treatment



Ablative treatment

2. 1927nm Thulium Laser treatment is less damage to the skin, safer and less recovery time than the ablative laser treatment



1927nm Thulium Laser Technical Parameters

Model name	HONKON-1927KK	Pulse energy	5mj-100mj(step 5mj)
Wavelength	1927nm	Pulse width	0.067ms-6.7ms
Laser power	15W	Output type	dot - matrix
Output mode	Pulse mode Continuous mode	Beam Delivery	Fiber
Dimensions	73*47*110cm ²	Gross Weight	52kg

1927nm Thulium Laser before & after



Crow's feet



Skin Rejuvenation/Pigmentation



Acne scar



Skin brightening & whitening